



THE NUGGET



A Message from Our President

I want to wish our members a very warm welcome. With covid keeping us from doing the things that we love, I am happy to say that we are finally open again. As the months flew by, we've been looking forward to being able to meet our new members and work together once again.

During the past two years, we had a few donations which will help support our club, add to our growing collection of rocks, and allow us to acquire new equipment. I would like to extend a special thank you to the families of Sue Fleischmann, Ronnie Umans, Sumate Jiemjitpolchai, and Madeline Todd for their generous donations.

I look forward to seeing all of our members, old and new, at upcoming meetings and workshops.

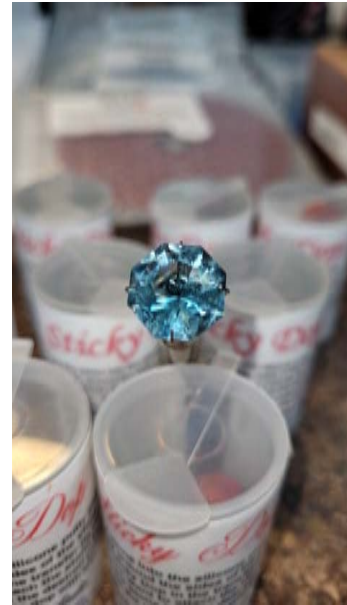
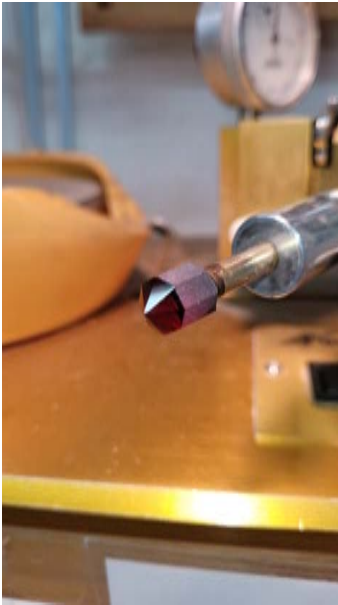
Diane Angus, NMC President

Rock Sale



For several weeks before reopening the club officially, we were able to hold a sale of rocks and minerals that were donated to us over the past two years. Our members got some terrific bargains, got to see each other in person for the first time in years, and a great time was had by all.

Sue & Diane's Faceting Adventure



This past May, our own Sue Goldman and Diane Angus went to the William Holland School of Lapidary Arts in Young Harris, Georgia, to learn how to facet, in hopes of bringing the art back to our club. They had a very successful time learning all about the art and science of faceting gemstones and are already hard at work, updating our machines. We hope to have our faceting area ready to go in a few weeks. If you are interested in learning how to facet, please let them know.

Bylaws Update

Over the past few months, a committee was formed to update the bylaws of the Corporation. Many changes have been made to reflect current operating procedures and structure. Our attorney has reviewed the proposed bylaws and his suggested edits have been incorporated.

The bylaws have been sent to members via email for their review and we will be holding a vote of the membership on **June 14th at 7pm** via zoom. Please

make every effort to attend. The zoom information will be sent in a separate email closer to the date of the meeting.

This committee also created new Lapidary Workshop Policies that all members need to be familiar with. All members will be asked to read and sign a new Waiver of Liability when they attend the workshop. Below are the new Policies.

NASSAU MINERAL CLUB

LAPIDARY WORKSHOP POLICIES

Safety

- You must ALWAYS wear safety glasses when using lapidary equipment*.
- Long hair must always be tied back.
- When using lapidary equipment*, remove items such as scarves and loose jewelry that could get entangled in the equipment. If wearing long sleeves either roll them up or secure the cuffs so that they do not dangle.
- Ensure that the work area is clean and free of debris.
- All equipment must be used as intended and according to instructions.
- Proper attire includes a shirt or blouse and jeans, trousers, or shorts and shoes.
- No bare feet. No open-toed shoes.
- Always turn off the water and power to the machine you are using whenever you leave or turn away from that station no matter how briefly. This includes just turning away to talk to someone and when “just getting up to check on something”.
- If unsure about something, ASK FOR ASSISTANCE!
- Only authorized personnel are permitted to repair or replace wheels or blades on the equipment.

Workshop Rules

- You must be trained on each machine prior to using that machine.
- You may have more than one stone in some stage of work, but you may not engage in any form of “mass production.”
- Children under the age of 16 are not allowed to use any power equipment.
- Always leave equipment in a safe and working condition. If you encounter a problem, notify a club officer and do not continue until it is deemed safe to do so.

- All rock saws, capping and faceting machines must be run with water or suitable coolant and never run dry.

- Do not put anything down a sink unless you are certain it is permissible. Any fluids that cannot be disposed of in the sanitary sewer are to be put into specifically designated containers.

Etiquette

- If you are done with a stone and want to start another one on the same machine, be certain that there is no one waiting to use the machine.

- All machines and machine areas **MUST** be cleaned after use. This includes cleaning and drying grinding machines, saws, soldering station, kiln area, etc.

- All tools and equipment **MUST** be returned to their designated places in the supply cabinet.

- Help with general room clean up at end of your session.

General Operations

- To utilize the workshop area in any capacity, you must be a current paid member of the Nassau Mineral Club and you must first sign in and pay the weekly fee. You may be required to show your membership card.

- The Nassau Mineral Club is a not-for-profit organization. As such, none of the Club's assets can be used for the monetary gain or profit of any individual. This means that the equipment may not be used for any member's gain. You should not be mass producing any items in quantity for sale or trade.

- We want to make sure that everyone has access to the machines. Please do not monopolize any equipment if others are waiting to use it.

- You are to provide your own cutting rough. Starter or practice material will be available, but these stones will be limited.

*Rock Saw, Trim Saw, Grinding Machine, Polishing Machine, Drill Press, Soldering Torch, Kiln, Flex Shaft, Centrifuge, Wax Injector, Sheet Metal Cutter, Faceting Machine, Rolling Machine, Tumbler, Pickle Pot, Jool Tool, Clay Oven, etc.

Upcoming Events

Springfield, MA Gem & Mineral Show – August 13, 2022

In Memoriam

The Club lost several members over the past two years. Please join us in remembering:

Sumate Jiemjitpolchai

Thomas Martins

Madeline Todd

Ronnie Umans

NMC Officers 2022

PRESIDENTS: Diane Angus and Dennis Kirchner

VICE PRESIDENT of LAPIDARY: Jim Sisti

VICE PRESIDENT of MEMBERSHIP: Rose Marie White

VICE PRESIDENT of EVENTS: Elise Gad

SECRETARIES: Barbara Kruger and Jen McAndrews

TREASURER: Elaine Grayson

NEWSLETTER EDITOR: Cristine Martins

EFMLS LIASON: June Miller

WEBMISTRESS: Sue Goldman

Nassau Mineral Club

50 Barry Drive, Glen Cove
United States of America

You received this email because you are a
member of the Nassau Mineral Club.

[Unsubscribe](#)



